

WALK-BEHIND ROLLER

LIGHT COMPACTION EQUIPMENT



One Tough Animal

TWO IN ONE

► TRULY MULTI-PURPOSE

Adjustable weights allow quick switching from working on asphalt to loose substrate. Designed to excel in both applications, this fully hydraulic machine is the most versatile solution for your job site.



► ASPHALT READY

Water sprinkler and 60-liter tank come as standard – effectively preventing asphalt from caking on the drums.



► ADVANCED TECHNOLOGY

Durable, fully hydraulic drive allows for precise speed adjustments and improves the machine's uptime and performance.



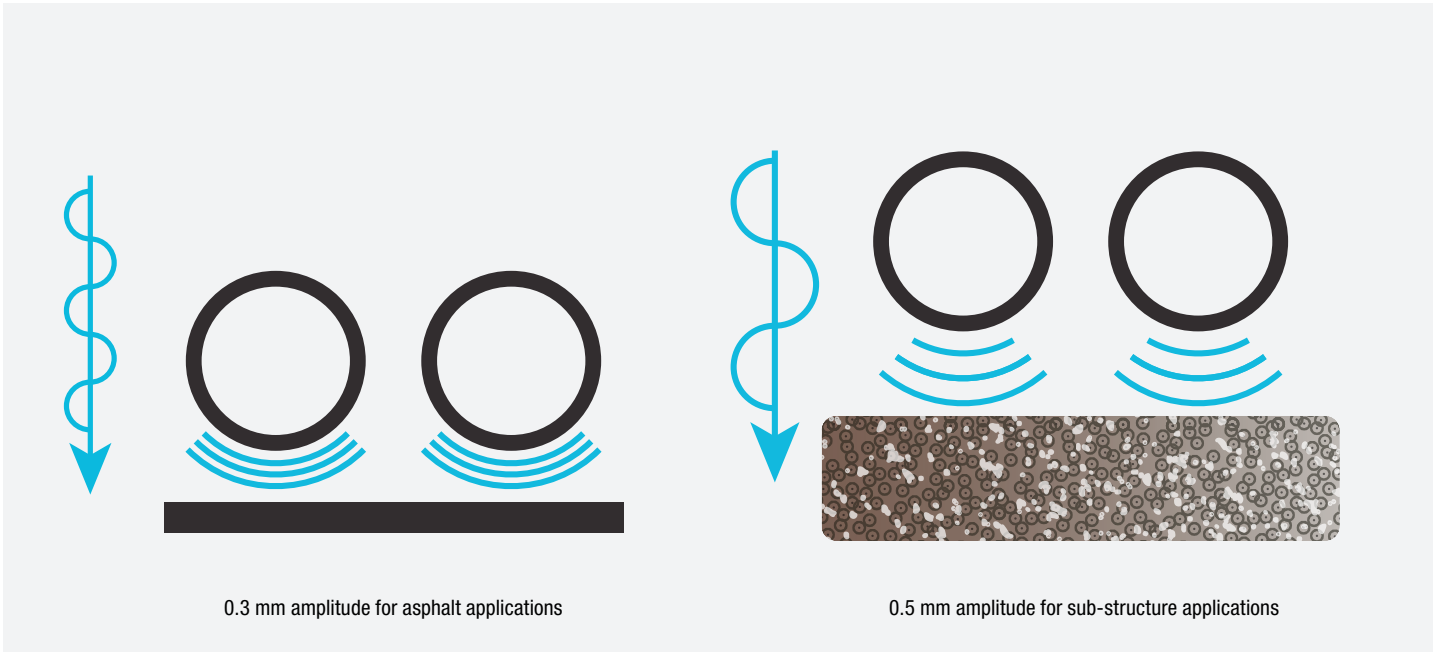
PERFORMANCE



► PRACTICAL SOLUTION

Built to meet the challenges of every job site: full side clearance allows you to work in close proximity to walls, corners and curbs. Additional handy features – like automatic parking brake or dead-man handle – are designed around the way you work.

To further enhance the roller's versatility, adjustable eccentric weights allow the operator to choose between high and low amplitude settings. While high amplitude allows working on loose sub-structures, low amplitude is perfect for compacting asphalt.



► APPLICATIONS

A small machine tackling big challenges. Bobcat's walk-behind roller is an exceptionally versatile machine thanks to its high productivity and adjustable performance. After all, it's not the size – it's how many ways you can use it.

- Earthwork and asphalt applications
- Sidewalk / cycle paths construction / repair
- Sport grounds
- Agricultural roads construction / maintenance
- Forest road construction / maintenance

► BUILT TO LAST

Bobcat's construction equipment has always set the standard for durability and reliability. The selection of high-quality components and protective covers is made to keep our walk-behind roller in the field, day after day.

EASY TO USE



► ACCESSIBLE TO EVERYONE

Bobcat walk-behind rollers are equipped with dead-man's handle as standard, and an additional mechanical safety button in the back that stops reverse movement when pushed. A hydraulic parking break and a limited reverse speed of 2.5 km/hour makes operating the machine easy and safe, even for less experienced operators.



► COMFORTABLE GRIP

Carefully designed guide handle features several grip options and ergonomic height adjustments to suit the needs of every operator. Optimized for control and comfort, the whole handle is suspended, which further reduces vibration levels.



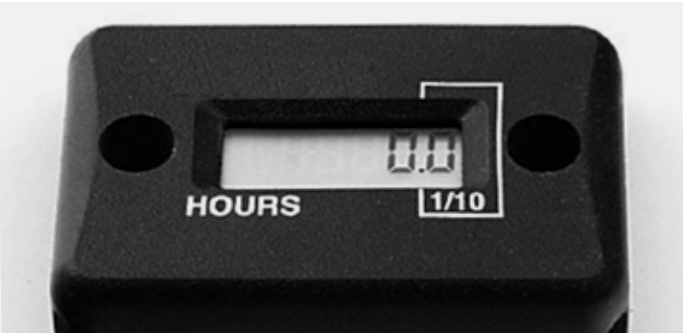
► EASY SERVICING

A day in the shop doesn't earn you a cent. To make daily maintenance as simple as possible, we've eliminated the need to use any special tools. All service points are easily accessible and intuitively located.



OPTIONS

OPTIONS		
	HATZ	YANMAR
60 L Water tank with sprinkler system	Standard	Standard
Scrapers on front and back drum	Standard	Standard
Operating hour meter	•	•
Protection frame in front	•	•
Electric starter	•	Standard



ALWAYS ON TIME
Vibration-activated hour meter can be fitted on the walk-behind roller to help you monitor working hours and ensure that maintenance needs are met.



ELECTRIC STARTER
Hatz engine version can be equipped with an electric starter for an effortless beginning to every shift (standard on Yanmar model). No need to crank the machine before work anymore.

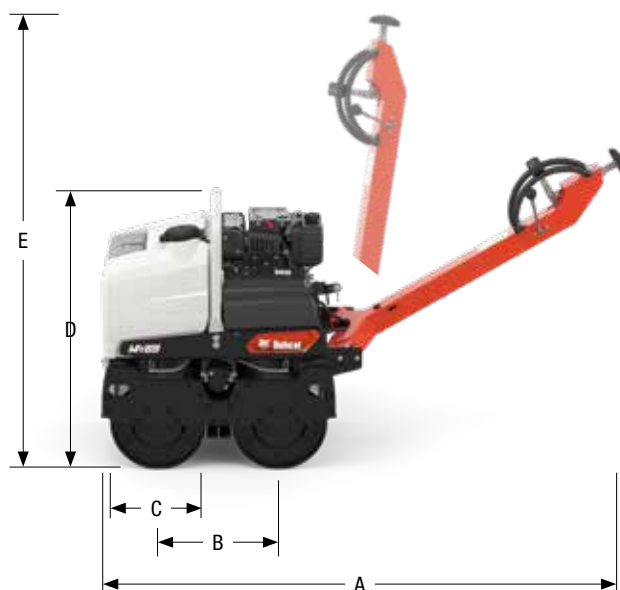


WALK-BEHIND ROLLER

SPECIFICATIONS

SPECIFICATIONS		
	WR65	
WEIGHT & DIMENSIONS	HATZ	YANMAR
Machine weight	719 kg	712 kg
Machine weight with e-start	738 kg	712 kg
A Machine length	2 288 mm	
B Wheelbase	500 mm	
C Drum diameter	400 mm	
D Machine height	1 110 mm	
E Transport height	1 835 mm	
F Machine width	720 mm	
G Drum width	650 mm	
ENGINE		
Engine	Hatz 1D42S	Yanmar L100N
Fuel	Diesel	
Engine output	6.1 kW	
Fuel consumption	1.7 l/h	1.2 l/h
COMPACTION FORCES		
Max. vibration frequency	60 Hz	
Centrifugal force	11/21 kN	
Linear pressure	5.7 kg/cm	5.5 kg/cm
Amplitude	0.3/0.5 mm	
Max. compaction depth (soil)	20/15 cm	
Max. compaction depth (sand)	30/25 cm	
MISCELLANEOUS		
Speed (forward)	4 km/h	
Speed (backward)	2.5 km/h	
Gradeability with vibration	25%	
gGradeability without vibration	44%	
Fuel tank capacity	5 l	4.7 l
Hydraulic oil capacity	20 l	
Water tank capacity	60 l	

Certain specifications are based on engineering calculations and are not actual measurements. Specifications are provided for comparison purposes only and are subject to change without notice. Specifications for your individual Bobcat equipment will vary based on normal variations in design, manufacturing, operating conditions, and other factors. Pictures of Bobcat units may show other than standard equipment.



Bobcat®


Bobcat is a Doosan Company.

Doosan is a global leader in construction equipment, power & water solutions, engines, and engineering proudly serving customers and communities for more than a century. Bobcat and the Bobcat logo are registered trademarks of Bobcat Company in the United States and various other countries. ©2021 Bobcat Company. All Rights Reserved.



GET **A QUOTE**

Simply click **the button** or scan **the QR code** below to access our quote request form.

We will contact you as soon as possible.
Thank you!



REQUEST QUOTE >