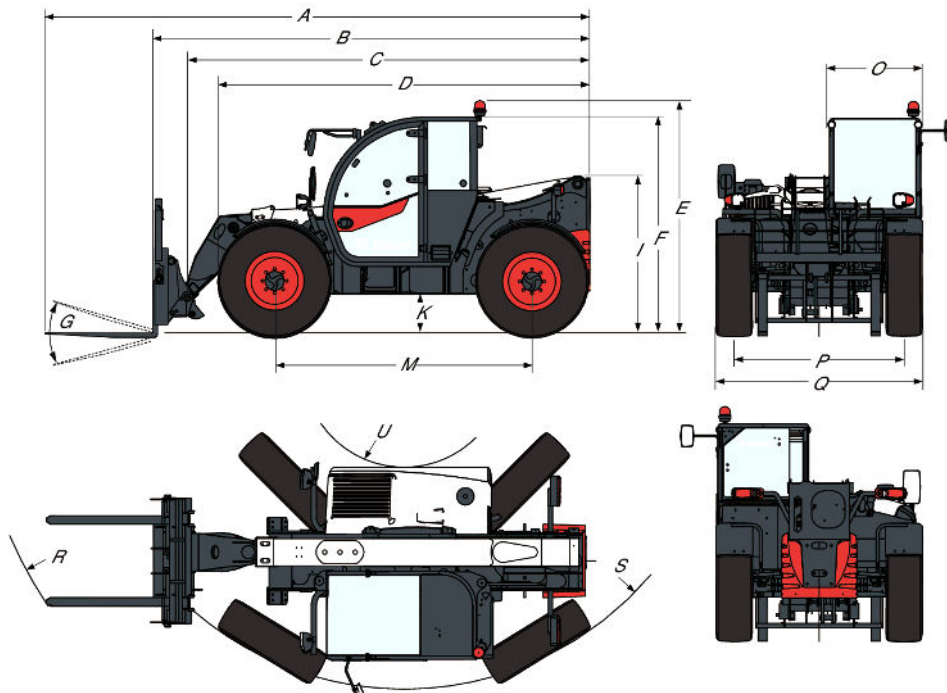


TL38-70HF 135 V R-Series Telescopic Handler

Telescopic Specifications

Dimensions

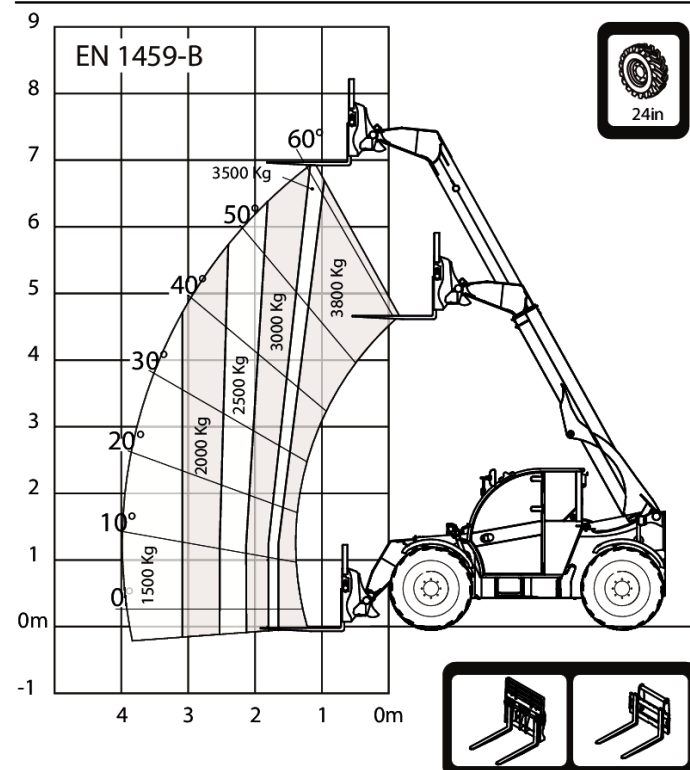
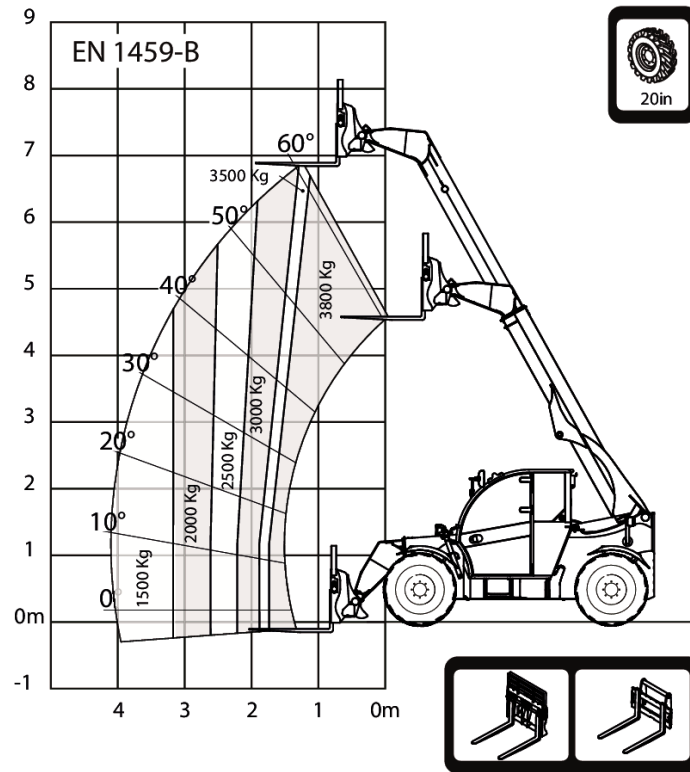


| | |
|--|-----------|
| (A) Overall length (to forks tip) | 6074.0 mm |
| (B) Overall length (to forks face) | 4869.0 mm |
| (C) Overall length (to headstock pin) | 4763.0 mm |
| (D) Overall length (to front tyres / Stabilizers (when equipped)) | 4058.0 mm |
| (D*) Overall length (to front tyres 24" / Stabilizers (when equipped)) | 4145.0 mm |
| (E) Overall height (with rotating beacon) | 2503.0 mm |
| (E*) Overall height with 24" tyres (with rotating beacon) | 2587.0 mm |
| (F) Overall height (with roof wiper) | 2373.0 mm |
| (F*) Overall height with 24" tyres (with roof wiper) | 2457.0 mm |
| (I) Height back of the machine | 1668.0 mm |
| (I*) Height back of the machine with 24" tyres | 1752.0 mm |
| (K) Ground clearance | 346.0 mm |
| (K*) Ground clearance with 24" tyres | 430.0 mm |
| (L) Length - Front axle to forks face | 1356.0 mm |
| (M) Wheelbase | 2870.0 mm |
| (N) Length - Rear axle to machine rear | 643.0 mm |
| (O) Operator cab outside width | 1013.0 mm |
| (P) Track width | 1895.0 mm |
| (Q) Width over standard tyres | 2300.0 mm |
| (S) External turning radius (at tyres) | 3714.0 mm |
| (S*) External turning radius with 24" tyres (at tyres) | 3714.0 mm |
| (U) Internal turning radius (cab) | 1092.0 mm |
| (U*) Internal turning radius with 24" tyres (cab) | 1092.0 mm |
| (R) External turning radius (with forks spaced 1040 mm ext.) | 4925.0 mm |
| (R*) External turning radius with 24" tyres (with forks spaced 1040 mm ext.) | 4925.0 mm |
| (G) Carriage rotation angle | 135.0° |

TL38-70HF 135 V R-Series Telescopic Handler

Telescopic
Specifications

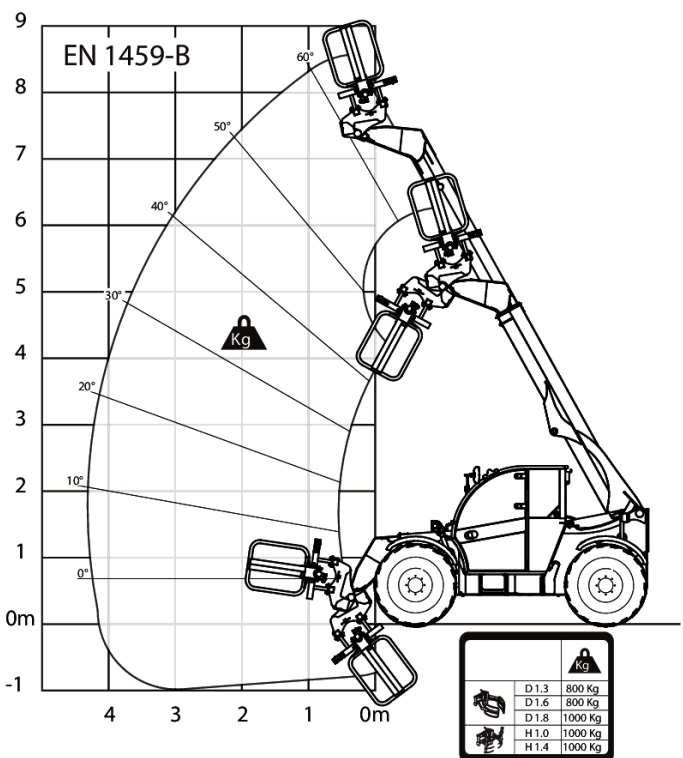
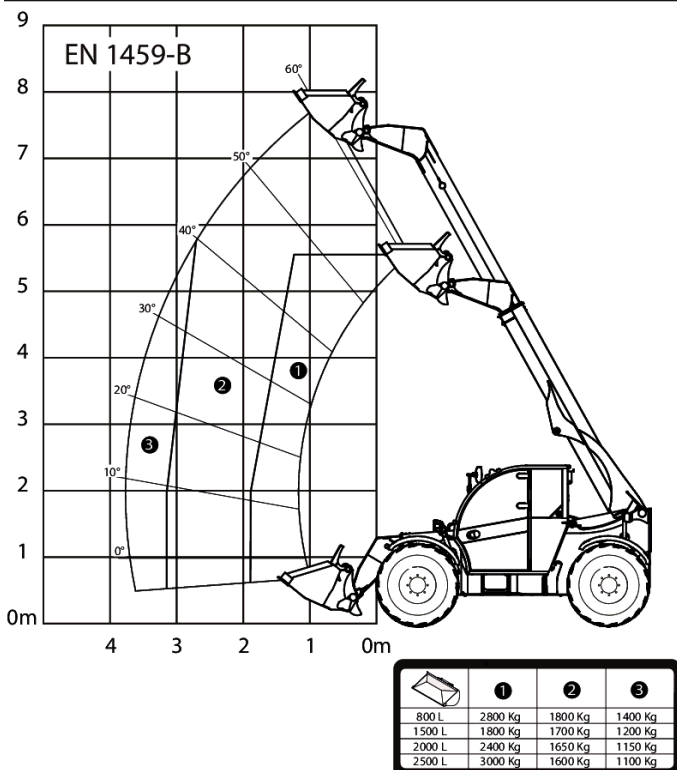
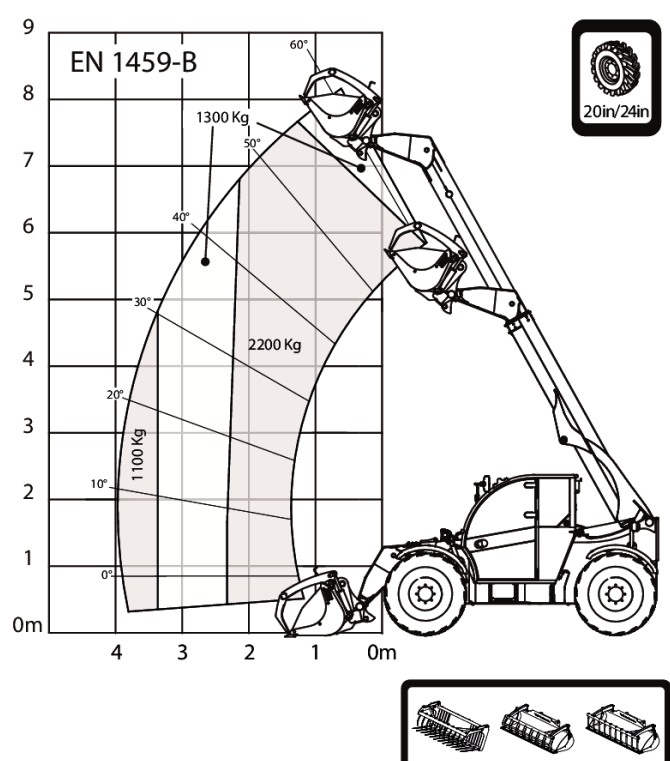
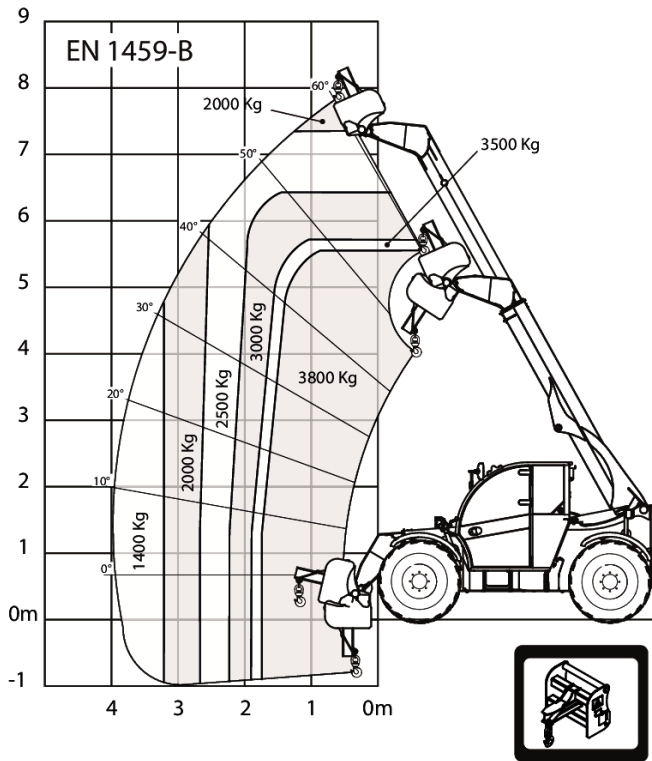
Load Charts



TL38-70HF 135 V R-Series Telescopic Handler

Telescopic Specifications

Load Charts



TL38-70HF 135 V R-Series Telescopic Handler

Telescopic Specifications

Performance

| | |
|---|-----------|
| Tilt Breakout force | 6200 daN |
| Drawbar pull (20" tyres) | 8000 daN |
| Drawbar pull (24" tyres) | 7000 daN |
| Max. gradeability (20" tyres) | 33.0° |
| Max. gradeability (24" tyres) | 33.0° |
| Max. gradeability with rated load (20" tyres) | 33.0° |
| Max. gradeability with rated load (24" tyres) | 33.0° |
| Rated capacity | 3800 kg |
| Capacity (at max. height on tyres) | 3500 kg |
| Capacity at max. reach (20" tyres) | 1500 kg |
| Capacity at max. reach (24" tyres) | 1500 kg |
| Lifting height (20" tyres) | 6889.0 mm |
| Lifting height (24" tyres) | 6973.0 mm |
| Max. reach (20" tyres) | 4002.0 mm |
| Max. reach (24" tyres) | 3915.0 mm |
| Reach at max height on tyres (20" tyres) | 1036.0 mm |
| Reach at max height on tyres (24" tyres) | 1123.0 mm |

Cycle times

| | |
|-----------------|-------|
| Boom raising | 4.9 s |
| Boom lowering | 4.3 s |
| Boom extension | 4.8 s |
| Boom retraction | 4.9 s |
| Crowding | 2.3 s |
| Dumping | 2.5 s |

Weights

| | |
|---|---------|
| Unladen weight (20" tyres) | 7190 kg |
| Unladen operating Weight (20" tyres) | 7390 kg |
| Unlade operating Weight on front axle (20" tyres) | 3020 kg |
| Unladen operating Weight on rear axle (20" tyres) | 4370 kg |
| Unladen weight (24" tyres) | 7330 kg |
| Unladen operating Weight (24" tyres) | 7530 kg |
| Unlade operating Weight on front axle (24" tyres) | 3090 kg |
| Unladen operating Weight on rear axle (24" tyres) | 4440 kg |
| Max ground Pressure on tyres-hard soil | 11.0 |

Engine

| | |
|----------------------------|--------------------|
| Make / Model | Bobcat D34 |
| Fuel | DIESEL |
| Cooling | COOLANT |
| Rated power (ISO 14396) | 101.0 kW |
| Rated speed | 2400.0 RPM |
| Maximum torque at 1400 rpm | 500.0 Nm |
| Number of cylinders | 4.0 |
| Displacement | 3.41 L |
| Bore | 98.0 mm |
| Stroke | 113.0 mm |
| Lubrication | Gear pump pressure |

TL38-70HF 135 V R-Series Telescopic Handler

Telescopic Specifications

Crankshaft Ventilation
Air filter
Ignition

Close breathing
Dry replaceable cartridge with safety element
Diesel compression

Electrical

| | |
|------------|--------|
| Alternator | 140 A |
| Battery | 110.0 |
| Starter | 2.7 kW |

Hydraulic System

| | |
|-------------------------------|---|
| Pump type | LS piston pump with electric displacement limiter |
| Pump capacity | 190.00 L/min |
| Relief valve pressure setting | 255.00 bar |
| Control valve type | Close center with flow sharing & flow compensators technology |
| Hydraulic filter specs | Full flow filtration |
| Auxiliary flow front | 150.00 L/min |
| Auxiliary flow rear | 150.00 L/min |

Drive system

| | |
|--------------|--|
| Transmission | Hydrostatic with electronic regulation |
| Main Drive | Hydrostatic motor + 2 speed gearbox |

Traction

| | |
|--|----------------------|
| Standard Tyres | 405/70-20 16PR TM R4 |
| Low range - turtle mode (24" / 20") | 6 / 5 |
| Low range - rabbit mode (24" / 20") | 11 / 10 |
| High range - turtle mode (24" / 20") | 16 / 14 |
| High range - rabbit mode (24" / 20") | 30 / 26 |
| Low range - turtle mode (24" / 20") - (Option high speed) | 6 / 5 |
| Low range - rabbit mode (24" / 20") - (Option high speed) | 12 / 10 |
| High range - turtle mode (24" / 20") - (Option high speed) | 18 / 16 |
| High range - rabbit mode (24" / 20") - (Option high speed) | 40 / 35 |

Optional Tyres

| |
|---|
| 405/70-20 16PR TM R4 |
| MICHELIN 400/80-24 162A8 IND TL POWER CL |
| 400/80-24 / 20PR TM R4 |
| MICHELIN 460/70R24 159A8/159B XMCL IND TL |
| MICHELIN 500/70R24 164A8/164B IND TL XMCL |
| NOKIAN 460/65R24 156A8/151D TRI STEEL TL |
| DUNLOP 405/70R24 168A2 152J MPT SPT9 |
| DUNLOP 405/70R20 168A2 152J MPT SPT9 |
| ALLIANCE 460/70-R24 159A8 |
| - |
| SOLIDEAL 400/80-24 /20PR TMR4 |
| MICHELIN BIBLOAD 460/70R24 159A8/159B |

TL38-70HF 135 V R-Series Telescopic Handler

Telescopic Specifications

Brakes

| | |
|-----------------------------|--------------------|
| Engine Braking | Hydrostatic |
| Parking and Emergency brake | Passive brake |
| Service Brake | Oil immersed discs |

Steering

| | |
|---------------|---|
| Steering Pump | Priority valve on control valve |
| Steering Mode | 2 wheel steering / 4 wheel steering / Crab-steering |

Fluid Capacities

| | |
|----------------------------|----------|
| Axles front/rear | 9,1/9,1 |
| Gear box | 1.80 L |
| Cooling system with heater | 15.00 L |
| Engine oil with filter | 14.00 L |
| Fuel tank | 138.00 L |
| Adblue® tank | 28.80 L |
| Hydraulic tank | 59.00 L |
| Hydraulic system | 126.00 L |

Fluid Specifications

| | |
|------------------------------------|---|
| Coolant | Ethylen Glycol Mix 50:73 |
| Engine Oil | "ACEA E7/9 API CJ-4 or above Viscosity: -30 to 40 °C : SAE 0W30 -20 to 40°C : SAE 5W30 -15 to 40°C : SAE 10W30" |
| Fuel | "Diesel fuel low Sulphur - EN 590 : 2013 -ASTM D975C-15 Grade 1D or 2D S15" |
| Brake Fluid | None. Brakes use hydraulic system pressure |
| Hydraulic Fluid | MS68 |
| Transmission Oil | ELF SF3 / TOTAL DYNATRANS FR |
| Grease for hinges and boom gliders | TOTAL MULTIS EP2 |

Controls

| | |
|---------------------------------------|--|
| Engine | Electronic engine speed governor |
| Starting | Key-type starter switch and shutdown. |
| Front auxiliary | Variable thumbwheel on joystick |
| Boom raising / lowering | Joystick electronic |
| Boom extension /retraction | Variable thumbwheel on joystick |
| Service brake | Pedal-activated wet multi-disk on front axle |
| Secondary brake | Passive brake |
| Parking brake | Passive brake |
| Steering | Proportional hydraulic steering via a conventional steering wheel |
| Speed range and Forward/reverse drive | Switch for hydrostatic motor and switch on joystick or lever for FNR |
| Steering modes | Button and screen for selection |
| Auxiliary pressure release | Bobcat Coupler |
| Eco mode | Eco mode switch |
| SHS mode | SHS mode switch |

TL38-70HF 135 V R-Series Telescopic Handler

Telescopes Specifications

Instruments

Instruments

- Gauges
 - Engine RPM
 - Total operating hours
 - Job hours
 - Boom angle
 - Vehicle speed
 - Fuel gauge
 - Engine coolant temperature gauge
- Indicators
 - Front and rear wheel alignment status on screen
 - Headlight full beam
 - Headlight low beam
 - Position lights
 - Left and right turn
 - Trailer turn
 - Parking brake
 - Longitudinal stability level
 - Windscreen wipers
 - Work lights
 - Flashing warning light
 - Hazard warning lights
 - Gear Speed choice
 - Hydraulic function lock
 - Rear fog lights
 - Heater fan
 - Hydraulic fluid over-temperature
 - Engine coolant over-temperature
 - Low oil pressure
 - Battery not charging
 - Longitudinal stability alarm

Serviceability

Serviceability

- Access through the side engine cover and access panel:
 - Air cleaner
 - Fuel filter
 - Engine oil filter
 - Engine oil dipstick
 - Starter
 - Alternator
- Access within the cab:
 - Glass washer fluid
 - Fuses, diodes and relays
 - ISL control box

TL38-70HF 135 V R-Series Telescopic Handler

Telescopes Specifications

Environmental

| | |
|---|-----------------------|
| Operator noise level (LpA) (EN 12053) | 73 dB(A) |
| Sound pressure level at the operator station 2014 /1322 | 73 dB(A) |
| Annexe XIII - 40kmh : doors closed (doors opened) (LpA) | |
| Level of acoustic power (LwA) | 107 dB(A) |
| Whole body vibration (EN 13059) | 1.40 ms ⁻² |

GET **A QUOTE**

Simply click **the button** or scan **the QR code** below to access our quote request form.

We will contact you as soon as possible.
Thank you!



REQUEST QUOTE >