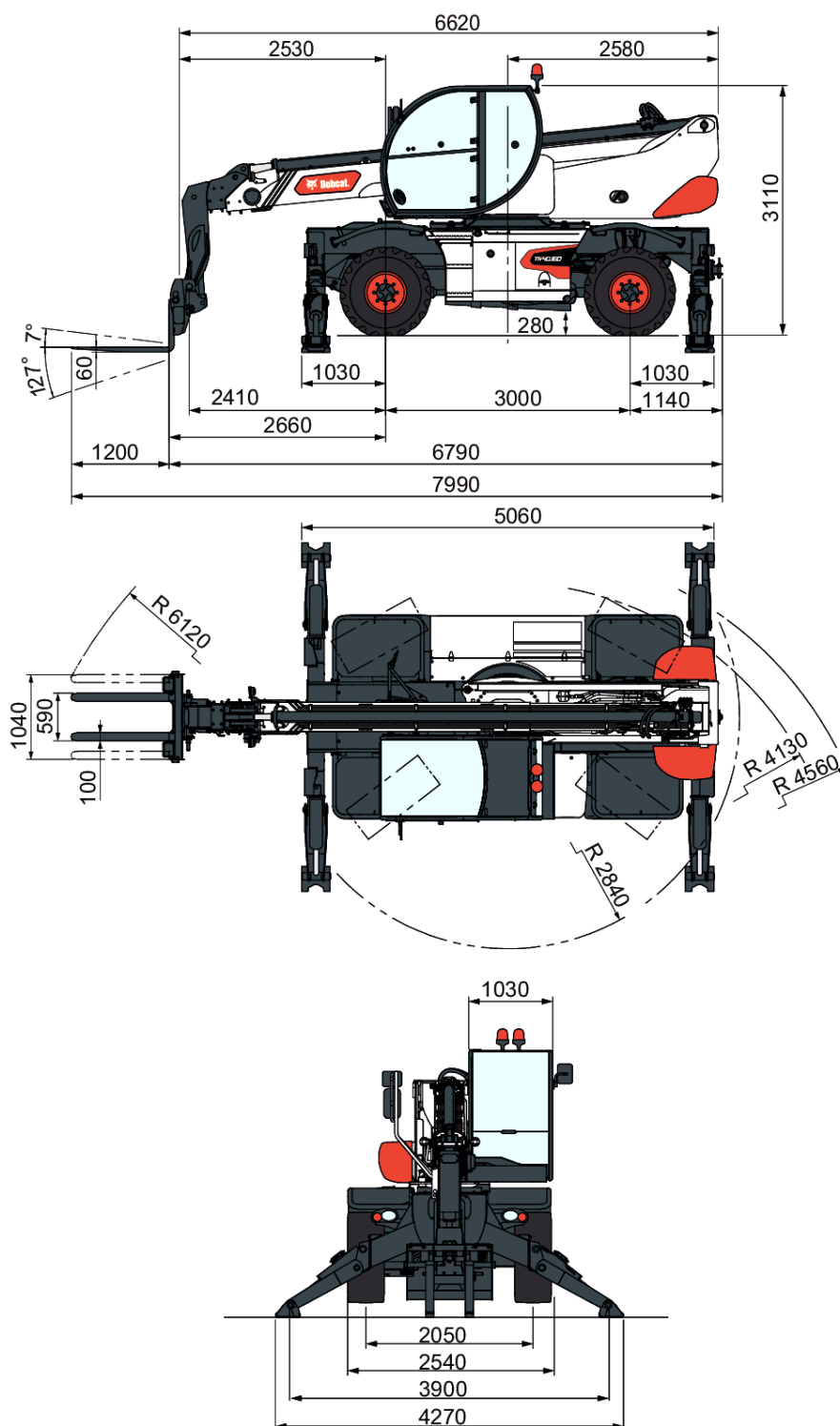


TR40-180 V Rotary Telescopic Handler

Telescopic
Specifications

Dimensions



B5AZ 11001 — B5AZ 99999 •

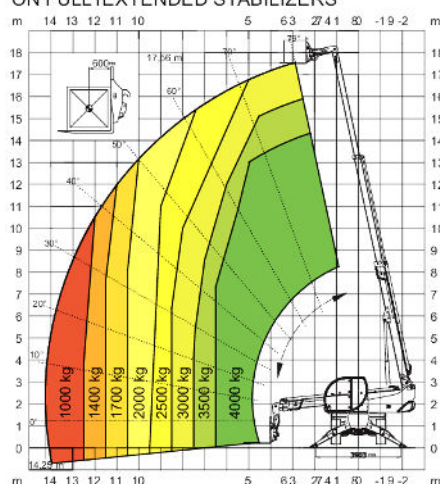
Specifications are subject to change without notice - Pictures of Bobcat units may show other than standard equipment

TR40-180 V Rotary Telescopic Handler

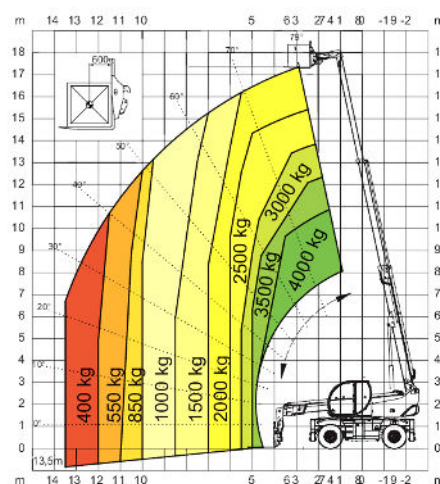
Telescopic Specifications

Load Charts

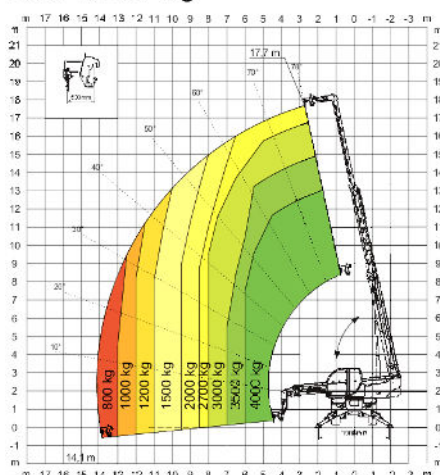
**360° LOAD CHART
ON FULLY EXTENDED STABILIZERS**



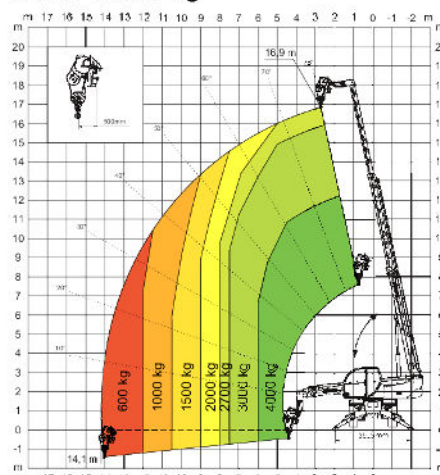
FRONTAL LOAD CHART ON TYRES



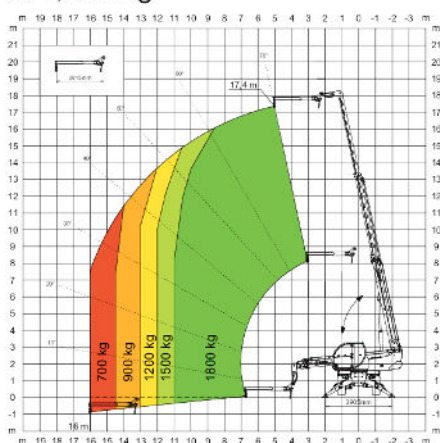
HOOK 4,000 kg



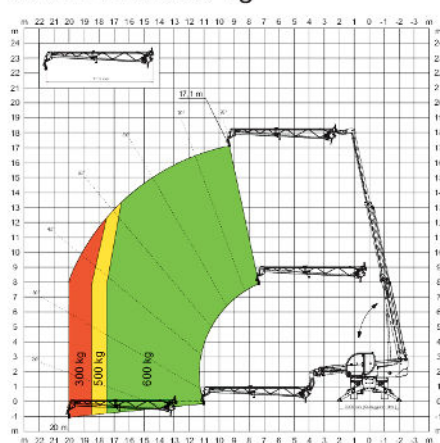
WINCH 4,000 kg



JIB 1,800 kg



JIB WITH WINCH 600 kg

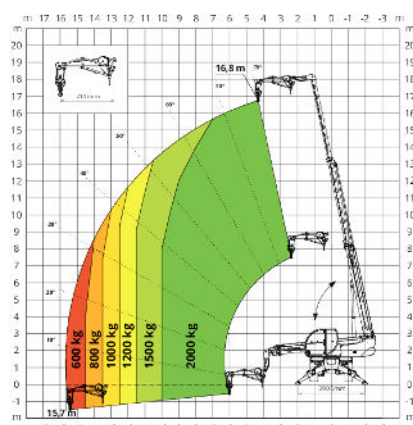


TR40-180 V Rotary Telescopic Handler

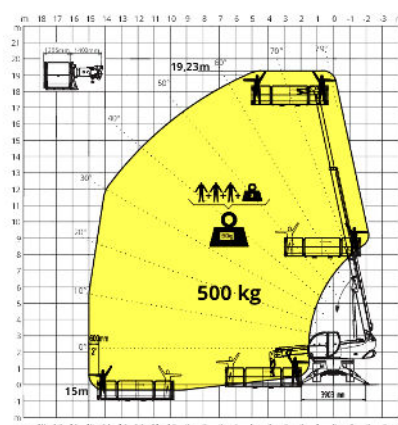
Telescopic Specifications

Load Charts

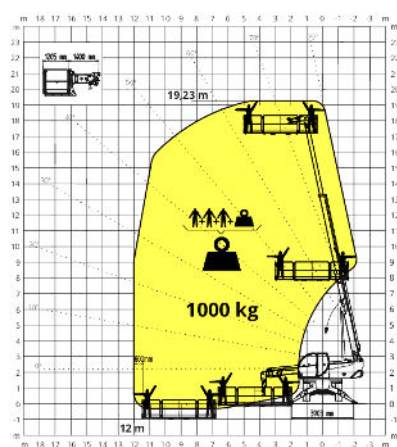
JIB WITH WINCH 2,000 kg



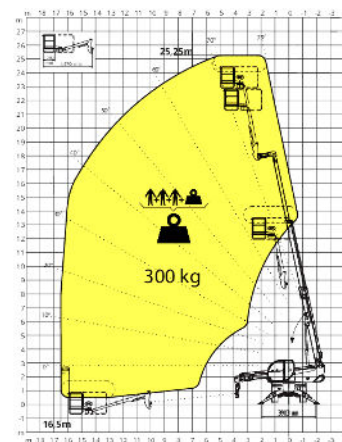
ROTATING EXTENDABLE BASKET 500 kg



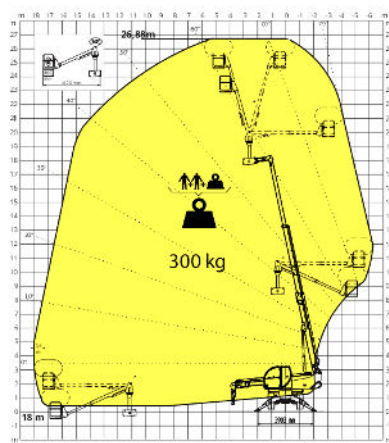
ROTATING EXTENDABLE BASKET 1,000 kg



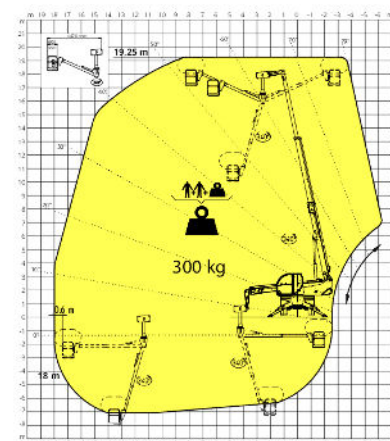
TELESCOPIC PIVOTING BASKET WITH 180° ROTATION



TELESCOPIC PIVOTING OVER-UNDER BASKET WITH 340° ROTATION



TELESCOPIC PIVOTING OVER-UNDER BASKET WITH 340° ROTATION



TR40-180 V Rotary Telescopic Handler

Telescopic Specifications

Performance

Rated capacity	4,000 kg @ 500 mm Load Center
Max. lifting height (stabilisers fully extended)	18 m
Capacity at max. height (stabilisers fully extended)	3000 kg
Max. reach (stabilisers fully extended)	14 m
Capacity at max. reach (stabilisers fully extended)	1000 kg
Frame levelling	N/A
Max. speed	25.0 km/h
Turret Rotation	+/-200° (limited)

Stabilisers

Type	Pivoting stabilisers
Stabilization system	Ground pressure detection. Automatic levelling.
Stabilization area (stabilisers fully extended)	5.06 x 4.27 m

Weights

Weight (unladen)	14400 kg
Front axle weight unladen (boom retracted and lowered)	6300 kg
Rear axle weight unladen (boom retracted and lowered)	8100 kg

Engine

Make / Model	DEUTZ TCD 3.6 L4
Compliancy	stage V
Fuel	Diesel
Cooling	liquid - Intercooler
Rated power (ISO 14396)	55 kW (75 hp) @ 2,200 rpm
Maximum torque	405 Nm @ 1,300 rpm
Number of cylinders	4.0
Displacement	3.60 L

Hydraulic System

Pump capacity	70.00 L/min
Output at the auxiliary line	65.00 L/min
Relief valve pressure setting	270.00 bar
Control valve (boom and turret)	Electro-proportional with flow sharing

Drive System

Transmission	Hydrostatic with electronic regulation / 4 wheel drive
Main drive	Electronically controlled variable displacement pump. Variable displacement motor. 2-speed gear box

Traction

Standard tyres	445/65 R19,5
Max. speed at Low range (turtle)	8.5 km/h
Max. speed at High range (rabbit)	25.0 km/h
Towing force	74.00 kN
Gradeability	53.00 %

TR40-180 V Rotary Telescopic Handler

Telescopic Specifications

Axles and brakes

Axle type	Oil-immersed axles with planetary gears
Rear axle	Oscillating and steering with hydraulic locking
Front axle	steering
Service brake	Hydraulically operated wet multi-disk brakes on each axle
Parking brake	Hydraulic with negative action
Emergency brake	Passive brake with automatic actuation

Steering

Steering modes	3 steering modes with semi-automatic wheel realignment. 2 wheel steering / 4 wheel steering / Crab-steer
External turning radius (with forks)	4 m

Fluid Capacities

Fuel tank	175.00 L
Adblue	10.00 L
Hydraulic reservoir	165.00 L
Engine oil	9.00 L
Cooling system	20.00 L

Environmental

Operator noise level (LpA) (En 12053)	74 dB(A)
Level of acoustic power (LWA)	104 dB(A)
Whole body vibration (ISO 2631-1):	0.42 ms ⁻²
Hand-arm vibration (ISO 5349-1)	0.41 ms ⁻²

Standards

Standard compliance	EN 1459-2: slewing variable-reach trucks. EN 13000: hydraulic cranes. EN 280: mobile elevating work platforms. FOPS/ROPS cabin. EU 2016/1628: engine emissions
---------------------	--

Standard Features

Standard Features

- Frame and Telescopic boom:
 - Quick fit carriage with manual attachment lock
 - Pallet Fork Frame Floating, 1,3m wide, Forks included
 - Auxiliary hydraulic line on boom head and return line to hydraulic tank
 - Automatic RFID tools recognition system
 - Man platform ready and electric emergency pump
 - Winch ready
 - Heavy duty axles with epicyclic reduction gears, oil immerse brakes
 - Rear axles oscillating and steering with hydraulic locking
 - Towing hook
 - Complete road lights (front & rear)
 - Right and left side mirrors
 - *****

TR40-180 V Rotary Telescopic Handler

Telescopes Specifications

- Cabin and main functions:
 - Cabin with full glass window door
 - Full tinted glass
 - Pressurized Cab, 100% air filtration
 - ROPS/FOPS operator cabin
 - Automatic parking brake
 - Roof window wiper
 - Front wipers with washer
 - Rotating beacon
 - Adjustable steering column
 - Heating, demisting and ventilation
 - Back-up alarm
 - Bluetooth radio, microphone & loudspeakers
 - Mechanical Suspension Seat
 - 7" touch screen
 - Jog shuttle
 - Two multifunctional joysticks with proportional controls and forward/reverse drive
 - Load moment control system with dynamic load chart on touchscreen display
 - Auto idle
 - Autoleveling system on stabilisers
 - 3 steering modes (2WS /4WS / CRAB) with semi-automatic wheel realignment
 - Rear axle lock indicator
 - Front and rear wheels alignment indicator
 - 24V Electric socket
 - CAN Bus technology with auto-diagnostic system
 - *****
- Drive/Engine/Hydraulic:
 - Gear pump 70 l/min at 270 bar
 - Electro proportional main valve with flow sharing
 - Hydrostatic transmission with electronically controlled variable displacement pump Variable displacement motor 2-speed gear box (turtle/rabbit)
 - 25 km/h max drive speed
 - Standard tyres - set of 4 x 445/65 R19,5"
 - Turbo-charged engine - Deutz TCD 3.6 L4 Stage V - 75hp / 405Nm
 - Battery Disconnection (inside engine compartment)
 - *****
 - 2 year warranty or 2000 hours (refer to the Bobcat standard warranty policy for terms and conditions)
 - Telemetry system

GET **A QUOTE**

Simply click **the button** or scan **the QR code** below to access our quote request form.

We will contact you as soon as possible.
Thank you!



REQUEST QUOTE >