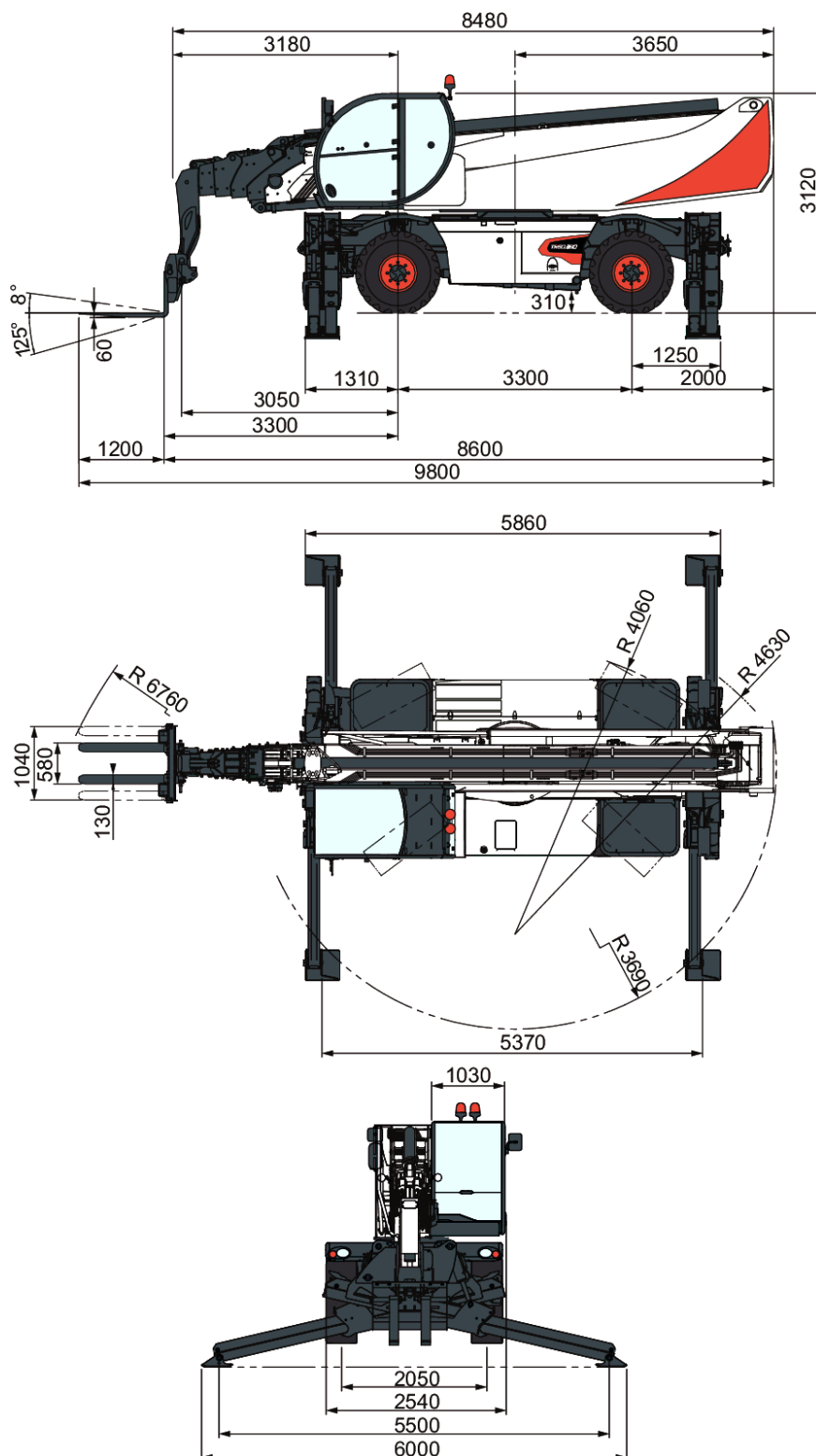


TR60-390 V Rotary Telescopic Handler

Telescopic
Specifications

Dimensions

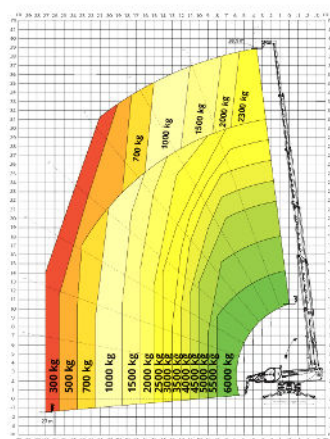


TR60-390 V Rotary Telescopic Handler

Telescopic Specifications

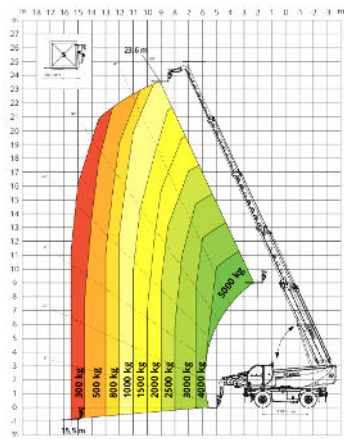
Load Charts

360° LOAD CHART
ON FULLY EXTENDED STABILIZERS

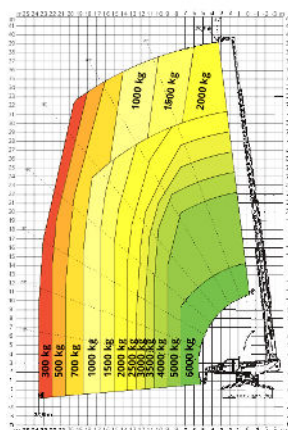


HOOK 6,000 kg

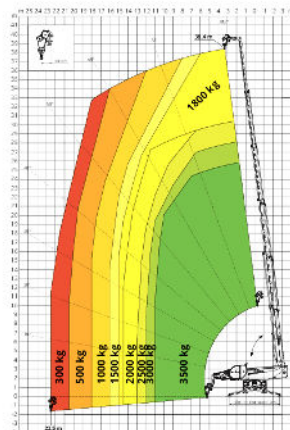
FRONTAL LOAD CHART ON TYRES



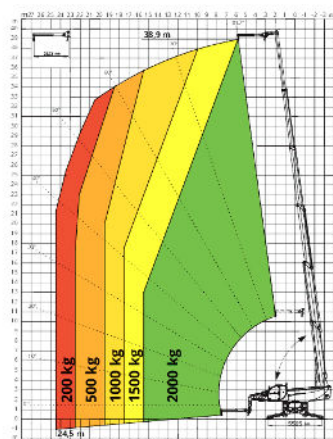
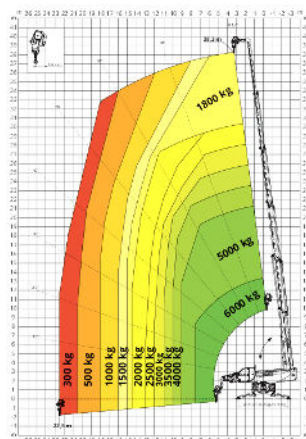
WINCH 3,500 kg



WINCH 6,000 kg



JIB WITH WINCH 2,000 kg

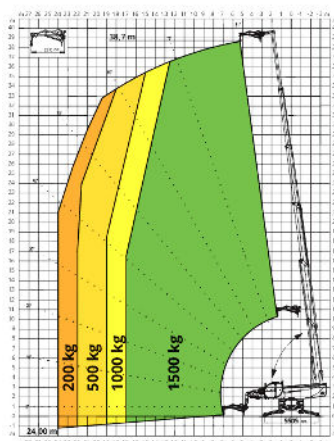


TR60-390 V Rotary Telescopic Handler

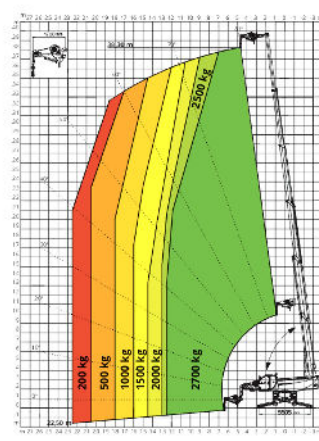
Telescopic Specifications

Load Charts

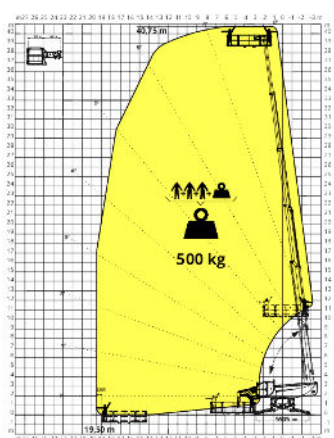
JIB WITH WINCH 1,500 kg



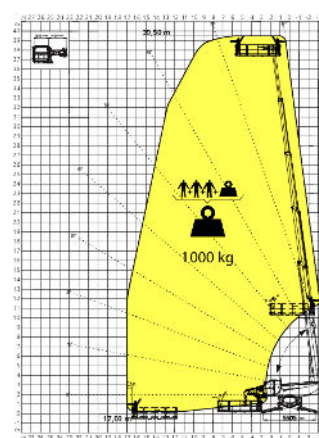
JIB WITH WINCH 2,700 kg



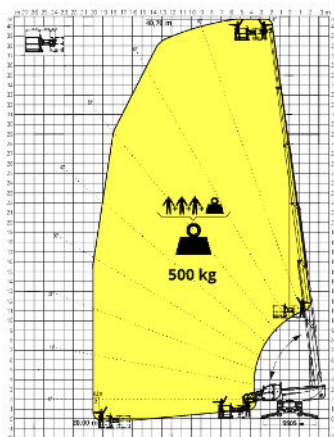
ROTATING EXTENDABLE BASKET 500 kg



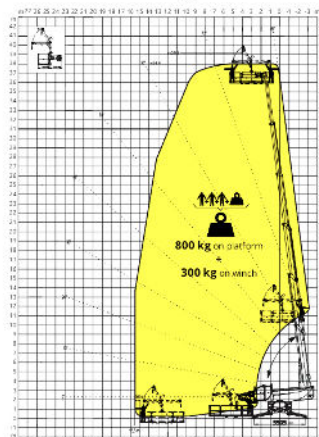
ROTATING EXTENDABLE BASKET 1,000 kg



ROTATING NON EXTENDABLE BASKET 500 kg



BASKET 6.5 m 500 kg
WITH WINCH 300 kg



TR60-390 V Rotary Telescopic Handler

Telescopic Specifications

Performance

Rated capacity	6,000 kg @ 600 mm Load Center
Max. lifting height (stabilisers fully extended)	39 m
Capacity at max. height (stabilisers fully extended)	2300 kg
Max. reach (stabilisers fully extended)	27 m
Capacity at max. reach (stabilisers fully extended)	300 kg
Frame levelling	+/- 8°
Max. speed	40.0 km/h
Turret Rotation	360° (Continuous)

Stabilisers

Type	Telescopic scissors
Stabilization system	Ground pressure detection. Automatic levelling. Lifting capacity adjusted in proportion to stabiliser extension
Stabilization area (stabilisers fully extended)	5.86 x 6.0 m

Weights

Weight (unladen)	24000 kg
Front axle weight unladen (boom retracted and lowered)	12000 kg
Rear axle weight unladen (boom retracted and lowered)	12000 kg

Engine

Make / Model	Volvo TAD 582 VE
Compliance	Stage V
Fuel	Diesel
Cooling	liquid - Intercooler
Rated power (ISO 14396)	175 kW (238 hp) @ 2,300 rpm
Maximum torque	925 Nm @ 1,380 rpm
Number of cylinders	4.0
Displacement	5.13 L

Hydraulic System

Pump type	Load Sensing pump
Pump capacity	124.00 L/min
Output at the auxiliary line	65.00 L/min
Relief valve pressure setting	350.00 bar
Control valve (boom and turret)	Electro-proportional with flow sharing

Drive System

Transmission	Hydrostatic with electronic regulation / 4 wheel drive
Main drive	Electronically controlled variable displacement pump. Variable displacement motor. 2-speed gear box

TR60-390 V Rotary Telescopic Handler

Telescopic Specifications

Traction

Standard tyres	445/65 R22,5
Max. speed at Low range (turtle)	11.0 km/h
Max. speed at High range (rabbit)	40.0 km/h
Towing force	152.00 kN
Gradeability	65.00 %

Axles and brakes

Axle type	Oil-immersed axles with planetary gears
Rear axle	Oscillating and steering with hydraulic locking
Front axle	Oscillating and steering with levelling +/-8°
Service brake	Hydraulically operated wet multi-disk brakes on each axle
Parking brake	Hydraulic with negative action
Emergency brake	Passive brake with automatic actuation

Steering

Steering modes	3 steering modes with semi-automatic wheel realignment. 2 wheel steering / 4 wheel steering / Crab-steer
External turning radius (with forks)	4 m

Fluid Capacities

Fuel tank	270.00 L
Adblue	40.00 L
Hydraulic reservoir	195.00 L
Engine oil	16.00 L
Cooling system	40.00 L

Environmental

Operator noise level (LpA) (En 12053)	72 dB(A)
Level of acoustic power (LWA)	108 dB(A)
Whole body vibration (ISO 2631-1):	0.58 ms ⁻²
Hand-arm vibration (ISO 5349-1)	0.85 ms ⁻²

Standards

Standard compliance	EN 1459-2: slewing variable-reach trucks. EN 13000: hydraulic cranes. EN 280: mobile elevating work platforms. FOPS/ROPS cabin. EU 2016/1628: engine emissions
---------------------	--

Standard Features

Standard Features

TR60-390 V Rotary Telescopic Handler

Telescopes Specifications

- Frame and Telescopic boom:
 - Quick fit carriage with manual attachment lock
 - Pallet Fork Frame Floating, 1,3m wide, Forks included
 - Auxiliary hydraulic line on boom head and return line to hydraulic tank
 - Automatic RFID tools recognition system
 - Man platform ready and electric emergency pump
 - Winch ready
 - Heavy duty axles with epicyclic reduction gears, oil immerse brakes
 - Rear axles oscillating and steering with hydraulic locking
 - Towing hook
 - Frame leveling +/-8°
 - Complete road lights (front & rear)
 - Right and left side mirrors
 - *****
- Cabin and main functions:
 - Cabin with full glass window door
 - Full tinted glass
 - Pressurized Cab, 100% air filtration
 - ROPS/FOPS operator cabin
 - Automatic parking brake
 - Roof window wiper
 - Front wipers with washer
 - Rotating beacon
 - Adjustable steering column
 - Heating, demisting and ventilation
 - Air conditioning (HVAC)
 - Back-up alarm
 - Bluetooth radio, microphone & loudspeakers
 - Mechanical Suspension Seat
 - 10" touch screen
 - Jog shuttle
 - Two multifunctional joysticks with proportional controls and forward/reverse drive
 - Load moment control system with dynamic load chart on touchscreen display
 - Auto idle
 - Autoleveling system on stabilisers
 - 3 steering modes (2WS /4WS / CRAB) with semi-automatic wheel realignment
 - Rear axle lock indicator
 - Front and rear wheels alignment indicator
 - 24V Electric socket
 - CAN Bus technology with auto-diagnostic system
 - *****

TR60-390 V Rotary Telescopic Handler

Telescopes Specifications

- Drive/Engine/Hydraulic:
 - Load Sensing piston pump 124 l/min at 350 bar
 - Electro proportional main valve with flow sharing
 - High precision slewing drive
 - Hydrostatic transmission with electronically controlled variable displacement pump Variable displacement motor 2-speed gear box (turtle/rabbit)
 - 40 km/h max drive speed
 - Standard tyres - set of 4 x 445/65 R22,5"
 - Turbo-charged engine - Volvo TAD 582 VE Stage V - 218hp / 925Nm
 - Battery Disconnection (inside engine compartment)
 - *****
 - 2 year warranty or 2000 hours (refer to the Bobcat standard warranty policy for terms and conditions)
 - Telemetry system

GET **A QUOTE**

Simply click **the button** or scan **the QR code** below to access our quote request form.

We will contact you as soon as possible.
Thank you!



REQUEST QUOTE >